

SUMMER CAMPS IN THE BELGRADE LAKES REGION

A CASE STUDY FOR ENVIRONMENTAL HISTORY

Danielle C. Sheppard Spring 2010

HISTORICAL ORIGINS

- The Gunnery Camp
- Religious Camps
YWCA/YMCA
- The American Camp Association

ECONOMIC AND SOCIAL TENSIONS

•*Socioeconomic Disparities between Permanent Belgraders and Summer Campers:*
Seasonal inhabitants display their disposable income by engaging only in recreational activities while local residents with generational ties to the region and to lake front property maintain Belgrade culture and depend on the lakes as a sustainable resource.

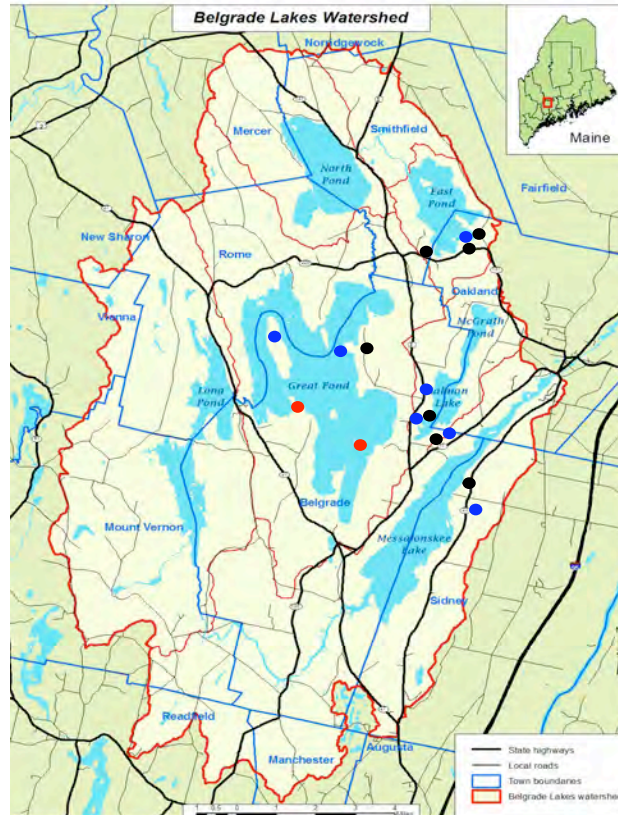
•*Cost of camp session at Pine Island Camp*
1907= \$150 (16.7% national median household income)
2010=\$6,850 (17.6% Belgrade median household income)

USE VALUE

- Back to Nature Movement
Primitiveness
Camps mimic Native American culture
- Belgrade Regional Conservation Alliance
•Engages local residents and summer visitors in programs to protect the lakes for future generations

TRANSPORTATION DEVELOPMENT

- 1842: Eastern Railroad Co. of MA constructs first railway from Boston to Portland
- 1849: Construction of Maine Central railway from Portland to Bangor
- 1904: Railway fare from Boston to Belgrade = \$4.25
- Early 1900's: rowboats, Stanley Steamer Bus and taxi cabs transport people from train depot to camp
- 1920's: Trolley becomes a popular, more scenic mode of travel around the Belgrades



SUMMER CAMPS IN THE BELGRADES

| TODAY | | |
|------------------|----------------------------------------|------------------|
| Camp Bomazeen | New England Music Camp | Camp Manitou |
| Camp Modin | Camp Motoaka | Camp Move It |
| Pine Island Camp | Maine Golf and Tennis Academy | Camp Runoia |
| HISTORICALLY | | |
| Camp Arcadia | Camp Somerset: 1898-1886 | Camp Arden (NP) |
| Birch Crest Camp | Camp Belgrade: 1937-1983 | Cedar Crest Camp |
| Coaquanock (NP) | Kennebec Sr. and Jr. Camps | Camp Abena (NP) |
| | Camp Merryweather: closed in 1938 (NP) | |

METHODS

1. Environmental Anthropology:
Examining the relationship between society and environment
 2. Science, Technology and Society:
Examining historical trends that connect the Belgrade region to national or international movements and processes
- Personal interviews
 - Archival research: primary documents and images

CASE STUDIES

1. PINE ISLAND CAMP

- 1892: Florence Colby bought Pine Island from the state
- 1902: Clarence Colby founded Pine Island Camp
- 1907: Dr. Eugene L. Swan bought PIC for \$6,000
Establishes mission for the "re-creation" of boys
- 1996: PIC lies its first electric wire across the lake
Rustic primitiveness remains a fundamental aspect of camp life
- 2007: PIC celebrates 100 years under the 3rd generation of Swan family operation



2. CAMP RUNOIA



Works Cited

- Eleanor's Vignettes. Church Camping Has a Colorful Past. Eleanor Ellis. Published January 1980.
Pine Island Camp: The First One Hundred Years. Published by Ben Swan, 2007.
Pine Island Camp. Brochure/website
BBC website
"To and Fro": Recollections of Camp Inwood. Author unknown.
Eleanor Ellis. History of Dogwood Camp: The First 100 Years. Eleanor Ellis. American Camping Association, 1988.
The Maine Memory Network. <http://www.mainememory.net/>
The Belgrade 1910
American Camp Association (website).
An Historical Journal of the Summer Camps Movement. Celeste Weyl
Belgrade Lakes Map Collection: 1515-1900. Arcanary.com
"1514 History of Summer Camps." Summer Camp Handbook. Jan Malinowski and Christopher Thurber, 2009.
www.summercamphandbook.com
Kennebec Highlands History Project: Sources and Resources. Compiled by Dale Richards