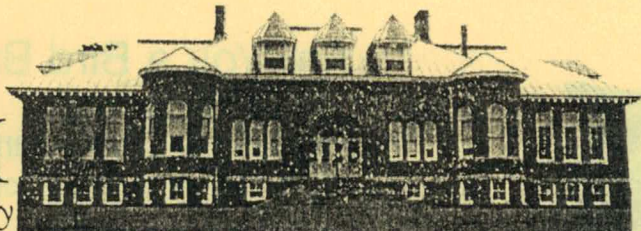


L.C. BATES MUSEUM

at Good Will-Hinckley



BUILDING FOR ANOTHER CENTURY OF COMMUNITY EDUCATION

1. Owl
2. Loon
3. Heron
4. There are 4 Bald Eagles. Three are young eagles and have not yet developed the white plumage that the adult eagle displays.
5. Eagles are carnivores which means they eat fish, rodents and other creatures that they are able to capture.
6. There is only 1 Golden eagle. Young Bald eagles resemble Golden eagles. Also the Osprey is often mistaken for an eagle.

Good Will-Hinckley (GWH) provides a home and helping hand to young people in need.

This not-for-profit organization has helped over 6,000 youth since 1889.

Today, GWH is home to young people once caught in a cycle of conflict and loss.

Before life at GWH, they lacked a stable home, school, or network of support.

The 2,450 acre campus serves as many as 300 youth per year, ages 11 to 21.

Good Will-Hinckley offers complete residential, educational, and counseling services.

The GWH program focuses on youth safety and well-being and nurtures strong, healthy families.

GWH is located on Route 201 north of Fairfield, off I-95 Exit 133

Internet address: www.gwh.org Museum Phone: 207-238-4250 Museum Email: lcbates@gwh.org

Are You a Bird Brain!

We sure are!

Match these Silhouettes with the Birds
in our Audubon Room



O _ L



H
_ R
_ N

Whooo am I??

(Answers posted on back)



L _ _ N

Birds and Their Beaks

The Beaks of a bird can tell you a lot!

As you explore, see if you can tell what kind of bird eats what kind of food.

The samples below should help.



Fish



Aquatic Plants/Insects



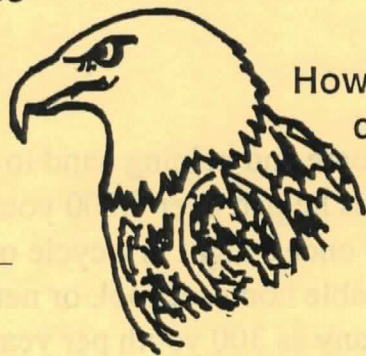
seeds



Meat

How many Bald Eagles
can you find? _____

What do eagles eat?



How many Golden Eagles
can you find? _____

Bald Eagle

(Answers posted on back)

The L.C. Bates Museum at Good Will-Hinckley
Phone: 207-238-4250 Internet: lcbates@gwh.org